

Albül

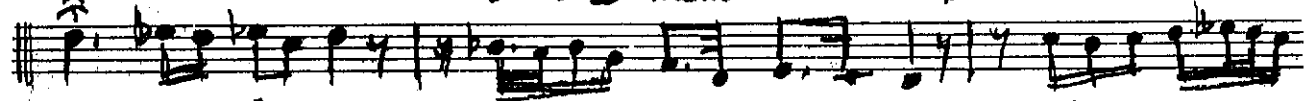
Kurdi li Hîcarî Kâr

söz: Beste Hemeser Kskd
Hök deş

anaragore



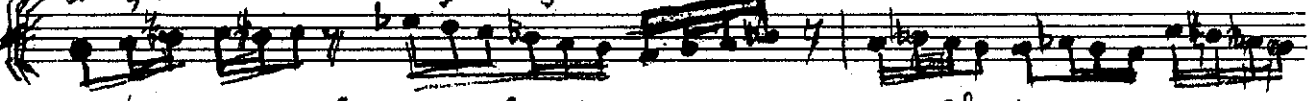
bül bü 'l sus i s ta mem din le mek sen sîr



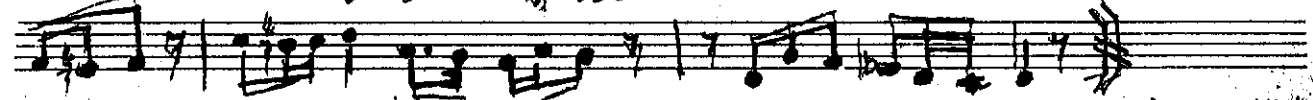
be ni di n le ye cek



a ş, Ki ma Fûk ta Ki gu



Ru ba Rü z gar u las tır sa o mahpu ba



mezan ha ya l Ka der u zak bîr ha ki Kat



ru hum bu 'gîna dün den mîs talik

